



**Bobcat®**

TELESCOPIC LOADER

TL35.70 TL38.70HF



***One Tough Animal™***

# TL35.70 TL38.70HF — SPECIFICATIONS

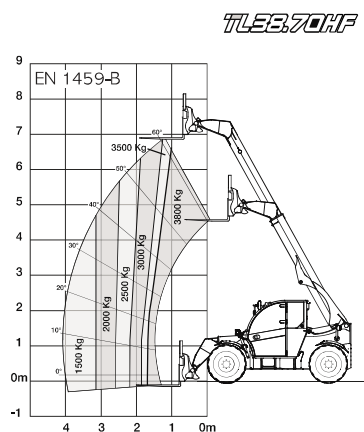
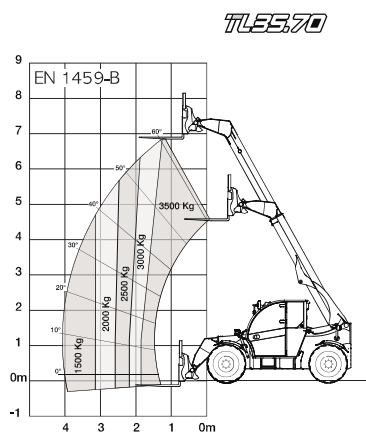
PERFORMANCE	TL35.70	TL38.70HF
Max. lift height with Standard tyres (on Stabilisers when equipped)	6889 mm	6889 mm
max lift Capacity	3500 kg	3800 kg
Max Forward reach with Standard Tyres	3915 mm	4002 mm
Crowding Force	6200 daN	6200 daN
Frame Tilt angle	-	-
Max Travel Speed(Transmission Option)	30(40) km/h	30(40) km/h

ENGINE	PERKINS 1104D-44TA	PERKINS 1104D-E44TA
Maker	PERKINS 1104D-44TA	PERKINS 1104D-E44TA
Power	100 HP	130 HP
Emission	STAGE IIIA/ Tier 3	STAGE IIIA/ Tier 3

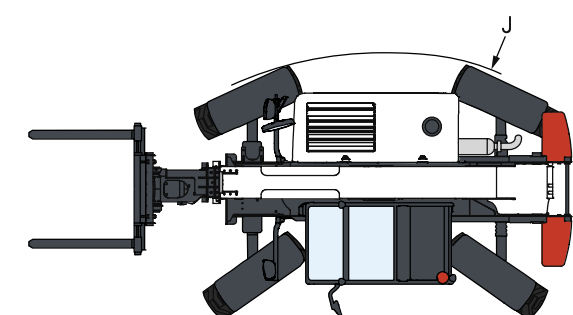
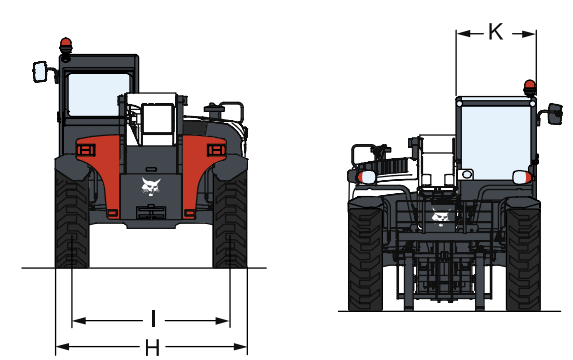
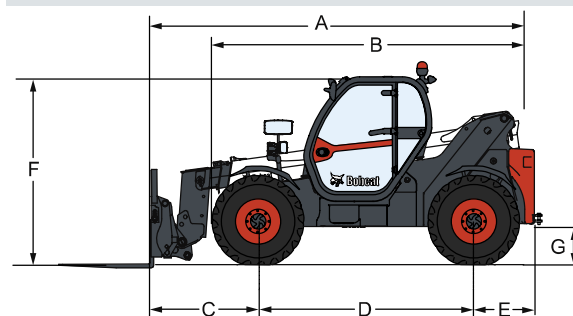
WEIGHT	TL35.70	TL38.70HF
unladen	7050 kg	7245 kg

TECHNOLOGIES	TL35.70	TL38.70HF
Transmission	Hydrostatic motor with electronic regulation/ 4-wheel drive + 2speed gearbox	
Pump type & capacity	Gear pump with LS valve - 100 l/min	Load sensing pump - 190 l/min
Braking	Hydraulic passive brake system with oil immersed discs and automatic parking brake operation Inching function combined with brake pedal (slow drive speed without changing engine RPM)	

## ROUGH TERRAIN LOAD CHARTS



## DIMENSIONS



	TL35.70	TL38.70HF
Standard Tyres	405/70-20"	405/70-20"
A	4869 mm	4869 mm
B	4058 mm	4058 mm
C	1356 mm	1356 mm
D	2870 mm	2870 mm
E	643 mm	643 mm
F	2290 mm	2290 mm
G	346(20") / 430(24") mm	346(20") / 430(24") mm
H	2300 mm	2300 mm
I	1895 mm	1895 mm
J	3714 mm	3714 mm
K	1013 mm	1013 mm



Specifications and design are subject to change without notice. Pictures of Bobcat products may show other than standard equipment.

